



BY THE WAY

Volume 11, Issue 1

A Bridgehaven Publication

Spring 2011

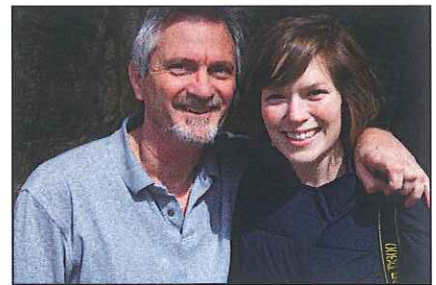
Shining a Light on Recovery — Photography

On Sunday March 6th we honored our excellent art therapy program with our annual Art As A Part Of Healing event.

Guest artists included photographers John Nation and Margaret Fenton, who worked with our members for over two months creating the beautiful photography exhibit! A stand out piece was taken by member Danielle B. and John Nation together at Central Park.

We were especially pleased that previous artists-in-residence returned and give this year's event a festival feel with their wares. Plus over 50 framed pieces by members and art therapists of Bridgehaven lined the hallways. Half of the ticket price of all art sold at the show goes to the Bridgehaven Art Therapy Program, and half to the member artist who created it.

Clockwise: The Art As A Part Of Healing photography gallery; Photographers John Nation and Margaret Fenton; member Paul W. with staff member Chris Coppel; member Kat W.



Special Thanks: *Artists:* John Nation and Margaret Fenton; *Past Artists-in-Residence:* Sarah Frederick, Janet Gream, Karen Johnson, Diana Brockaway Klem, Joel Pinkerton and Jonathan Swanz; *Art Therapists:* Stewart Bridgman, Rachel Wenzke, Jim Walker, Sherry Beliles; *Assistants:* Jim Keairns, Jenni Oglesby, Chris Thompson

Sponsors: YUM! Brands Foundation; Best Buy, Celebrations Framing; Framers Supply Co.; Brown-Forman; Murphy's Camera; Allegra Print & Imaging — Preston

Special Thanks: Mollie Smith and Kay Lowe, Event Committee; Pete Peterson, Keyboard.

Servers: Bridgehaven Board of Directors

Volunteer Hosts: Best Buy Employees



Mission Statement

Bridgehaven provides the highest quality community based psychiatric rehabilitation and recovery services, education, and support to those touched by mental illness.

Bridgehaven Program Information

Opportunity House / Bridge to Recovery

950 South First Street Louisville, KY 40203

(502) 585-9444, FAX: (502) 585-9466

www.bridgehaven.org

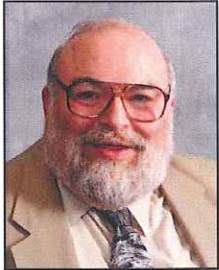
Admissions/Referral Coordinator: David Sisk, LCSW

Please remember Bridgehaven in your will. Bridgehaven is recognized by the Internal Revenue Service as a 501(c) (3) non-profit organization. If you have a car (or other vehicle) you'd like to donate, please contact Donna Schuster at (502) 585-9444.

Howard Bracco, PhD – A Legacy of Caring

In April, this community will say goodbye to a nationally recognized leader in the field of behavioral health-care. Dr. Howard Bracco is retiring from the position of President and Chief Executive Officer of Seven Counties Services Inc. During his tenure Dr. Bracco has been a champion for people who need, but cannot afford behavioral health services. He has always focused on creating access and high quality services for everyone in need. Dr. Bracco has been a pioneer in the field of mental health, substance abuse and intellectual disabilities. His innovative approach to providing services has resulted in a network of affiliate organizations that provide a continuum of care and increase access to a variety of needed services.

Bridgehaven is a proud and long-standing affiliate of Seven Counties. As an affiliate, Bridgehaven is able to provide psychiatric rehabilitation and recovery services to over 500 people each year. Dr. Bracco has



always promoted evidence-based and best practices in the mental health field. He has supported Bridgehaven's growth and transformation from a traditional day treatment program to one of recovery and community integration. In fact, Dr. Bracco has promoted Bridgehaven's programs and advocated for funding to assist Bridgehaven in providing services.

Bridgehaven's staff, members and Board of Directors congratulate Dr. Bracco on a long and productive career and we appreciate his leadership and vision that have shaped the behavioral health system in our community. We look forward to many more productive years working with his successor and the wonderful Seven Counties' staff to help people with mental illness achieve recovery.

Student Interns are a Win Win Proposition

We think that training interns is an important contribution to the mental health professions in Louisville and we are pleased to give these future professionals the opportunity to learn about mental illness and what works to help people in their recovery. In exchange we benefit from the energy and creativity that students bring, and our staff is challenged to articulate and teach what they know.

Bridgehaven accepts graduate school interns from the University of Louisville's Kent School of Social Work, the Art Therapy program and the School of Educational and Counseling Psychology. We also provide short practicum experience for nursing students from U of L and IUS. We recently collaborated for the first time with Spalding University's School of Occupational Therapy to provide practicum experience for a group of their students.

2011 Golf Marathon

100 Holes of Golf in One Day supporting Bridgehaven Mental Health Services

In just 4 EASY steps you'll be ready to play golf all day long on June 20th AND provide much needed support for Bridgehaven services!!!

1. set up a sponsorship webpage (10 minutes)
2. attend a golfer orientation meeting (optional, but only 30 minutes)
3. e-mail out your sponsorship page to your address book (10 minutes)
4. PLAY GOLF ALL DAY for FREE, eat all day in the process, AND go home with fabulous prizes!

If you have any questions please contact Donna Schuster or Golf Event Chair Allan Cobb at any time! We need, want and thank you so much for your participation. Funding for critical mental health services has never been needed more and we appreciate your support very much!!

Let us know SOON if you can play. It is SO EASY and FREE. Get a friend to join you if you want (but not needed) and call or e-mail us TODAY!

Donna Schuster 585-9469 dschuster@bridgehaven.org or
Allan Cobb 767-0651 allancobb@weissandcobb.com



*Thank
You*

**Greg Hendricks,
The Cubero Group**
Design/layout of our
annual report.

**Gary Owen,
Allegra Print and Imaging**
Printing Art As A Part Of Healing
invitations and our
annual report.

Janssen Pharmaceuticals
\$3,000
to fund members without
A payer source

**Dan Forte,
The Kentucky Center
for the Performing Arts**
Complimentary tickets for
Bridgehaven staff and volunteers

Bridgehaven Bridge Builders on Facebook

Please join us on facebook for all the latest updates on our events and programs. Search for Bridgehaven Bridge Builders.

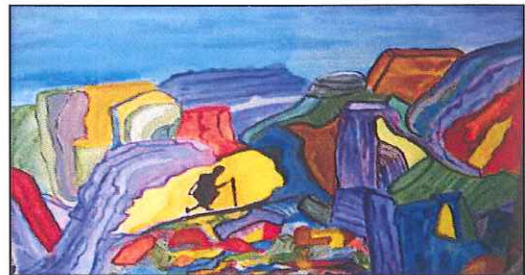


Bridgehaven Member Art – CARF

Bridgehaven's community based psychosocial rehabilitation programs have received accreditation from CARF (Council on Accreditation of Rehabilitation Facilities) since 2000. CARF recently relocated its headquarters in Arizona and requested submissions of consumer artwork to be displayed in the new location. They received nearly 1,000 submissions from all over the United States. Artwork by Brenda R. and Lynn N., two of Bridgehaven's members, was selected from among the many submissions. Congratulations to Brenda and Lynn, and thanks to our wonderful art therapists at Bridgehaven who promote healing and recovery through art.



Left: one of Brenda R.'s photos that was sold at this year's Art As A Part of Healing. Right: Lynn N.'s painting, which is now on display at CARF headquarters in Arizona.



Board Spotlight – Debbie Gober

Debbie Gober, a member of Bridgehaven's Board of Directors since 2009, was recently recognized by her employer, U.S. Bank, as featured employee of the month! The article included the following: "In addition to working at the Preston Meijer branch, Debbie serves on the Board of Bridgehaven. This is a passion of hers and she uses her Five Star Volunteer hours at this organization. Bridgehaven helps with rehabilitation, recovery and community integration for adults with severe and persistent mental illness. We are very proud of Debbie and feel certain that she will continue to shine in everything she is involved in."



Nonprofit Org
 U.S. Postage Paid
 Louisville, KY
 Permit No. 1322

Bridge Builder Luncheons
 May 18, 2011
 June 8, 2011
 Call Donna at 585-9469
 for a **FREE** reservation

Address Service Requested
 Louisville, Kentucky 40203
 950 South First Street
 Bridgehaven, Inc.



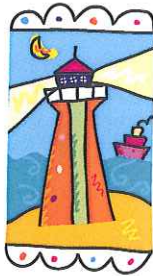
Upcoming Events

2011 Recovery Awards

Shining the Light on Recovery
Tuesday, May 24, 4:00 p.m.

Heuser Hearing Institute
 111-117 E. Kentucky St.

Please join us as we celebrate our member's achievements toward their recovery goals.



2011 Golf Marathon

100 holes of golf in one day!
Monday, June 20th

Oldham County Country Club

To play, or sponsor a player, please contact Donna Schuster at 585-9469 or dschuster@bridgehaven.org for more information.



For information on attending, volunteering or participating in any of our events, please call 585-9469.

Bridgehaven Board of Directors 2011 Officers

Chair	Rick Marshall
Vice Chair	Michelle Spurlock
Secretary	Michael Wakefield
Treasurer	Roger LeMaster

By The Way
 Jenni Oglesby, Editor

Bridgehaven's Community Based Psychosocial Rehabilitation Programs are accredited by CARF. Bridgehaven is a member agency of Metro United Way and an affiliate of Seven Counties Services, Inc.



In accordance with Federal law, this agency does not discriminate on the basis of race, color, national origin, sex, age or disability. To file a complaint write or call: Bridgehaven, Inc., Attn: Ramona Johnson, 950 S. First St., Louisville KY 40203, 502-585-9444.